

STARRETT-LEHIGH
601 WEST 26TH STREET, NEW YORK

SUITE 1680

FL 16 / 21,716 sq. ft.

SUITE FEATURES

- Views: 180 Degree Views, North/West/South Exposure
- Great Presence off the Elevator
- Will be delivered in a Whitebox Condition
- Available September 1, 2018

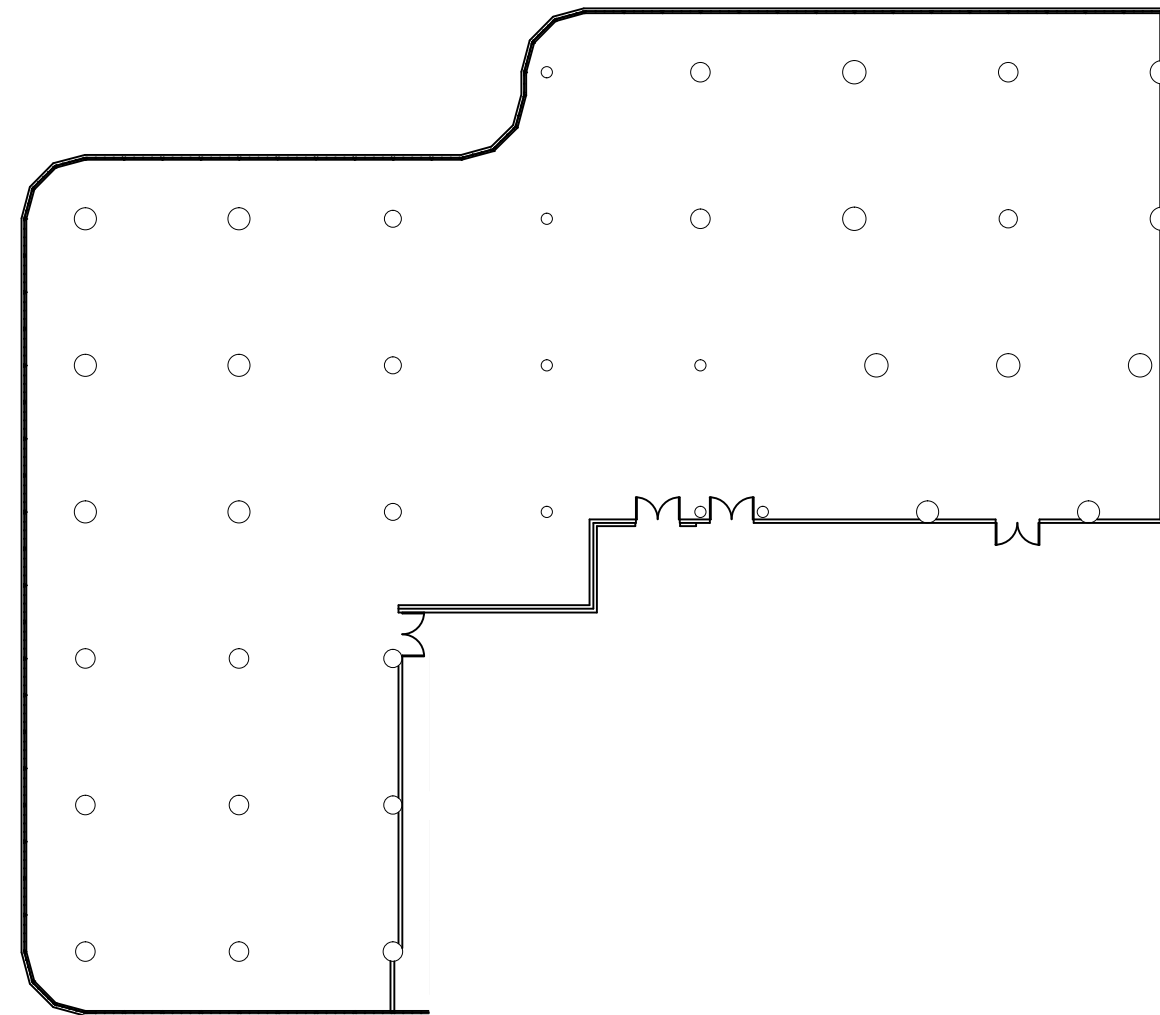
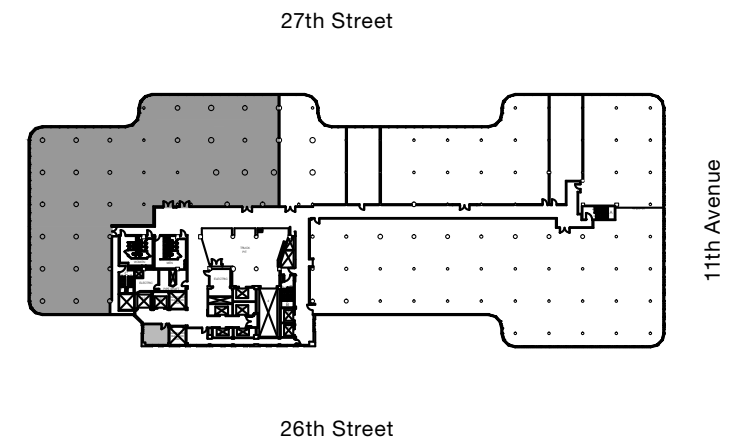
PROPERTY FEATURES

- Expansive floor plates, generous floor loads, column spacing conducive to a multitude of buildouts
- Abundant natural light & unobstructed views of the Hudson River & surrounding skylines
- Modernized building infrastructure, augmented elevator count to 13
- 3 freight elevators & 1 truck elevator allowing for direct delivery & food-truck services per floor
- Upgraded lobby, new lobby refinements, & engaging communal areas
- Major 2018 Cap-ex program: delivery of 40,000 SF integrated retail, performance, fitness, & dining; a new 11th Avenue entrance
- Private tenant shuttle service to major transportation hubs and subway lines
- Award-winning sustainability program: Community Supported Agriculture, rooftop garden, energy conservation, & robust recycling/composting
- Building amenities: a fully equipped fitness center, permanent and rotating food vendors, sample sales, rooftop wellness events, issued panel discussions, bike storage, tastings, & active digital presence via building screens, website, & social media
- Dog friendly building

**FOR LEASING INQUIRES & TO SCHEDULE A TOUR,
CONTACT DENISE RODRIGUEZ**

Denise.Rodriguez@RXRRealty.com / 212-924-3880

RXR



1/32" = 1' - 0"