

**STARRETT-LEHIGH**  
**601 WEST 26TH STREET, NEW YORK**

**SUITE 301**

**FL 3 / 12,777 sq. ft.**

#### SUITE FEATURES

- Close Proximity to the Elevators
- Ceiling Height of 12'8"
- Tenant Controlled HVAC

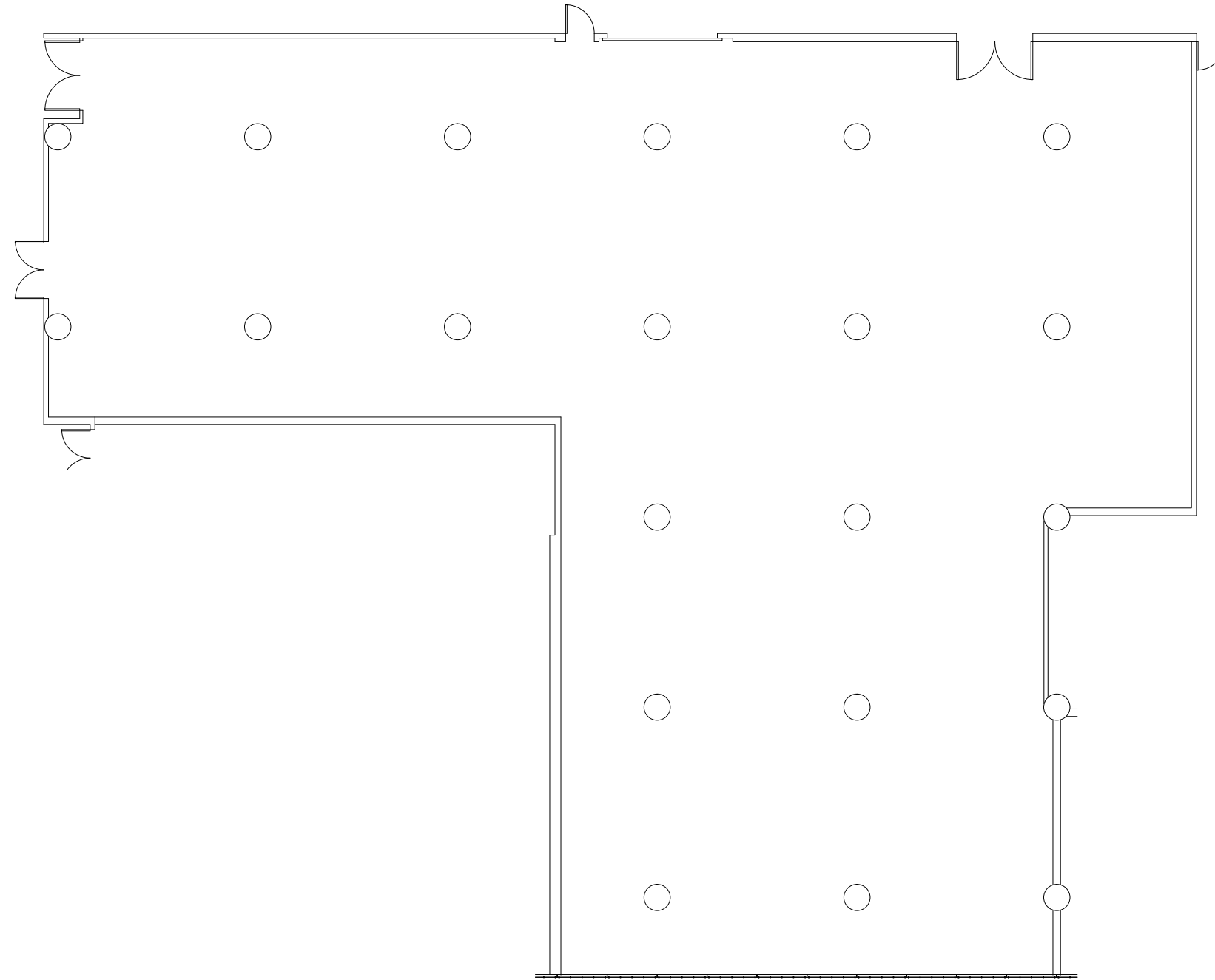
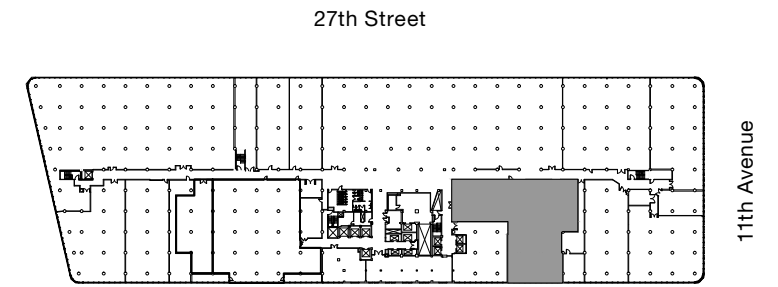
#### PROPERTY FEATURES

- Expansive floor plates, generous floor loads, column spacing conducive to a multitude of buildouts
- Abundant natural light & unobstructed views of the Hudson River & surrounding skylines
- Modernized building infrastructure, augmented elevator count to 13
- 3 freight elevators & 1 truck elevator allowing for direct delivery & food-truck services per floor
- Upgraded lobby, new lobby refinements, & engaging communal areas
- Major 2018 Cap-ex program: delivery of 40,000 SF integrated retail, performance, fitness, & dining; a new 11th Avenue entrance
- Private tenant shuttle service to major transportation hubs and subway lines
- Award-winning sustainability program: Community Supported Agriculture, rooftop garden, energy conservation, & robust recycling/composting
- Building amenities: a fully equipped fitness center, permanent and rotating food vendors, sample sales, rooftop wellness events, issue-led panel discussions, bike storage, tastings, & active digital presence via building screens, website, & social media
- Dog friendly building

**FOR LEASING INQUIRES & TO SCHEDULE A TOUR,  
CONTACT DENISE RODRIGUEZ**

Denise.Rodriguez@RXRRealty.com / 212-924-3880

**RXR**



**1/32" = 1' - 0"**